

CERTIFICATE OF LOCATION OF GOVERNMENT CORNER

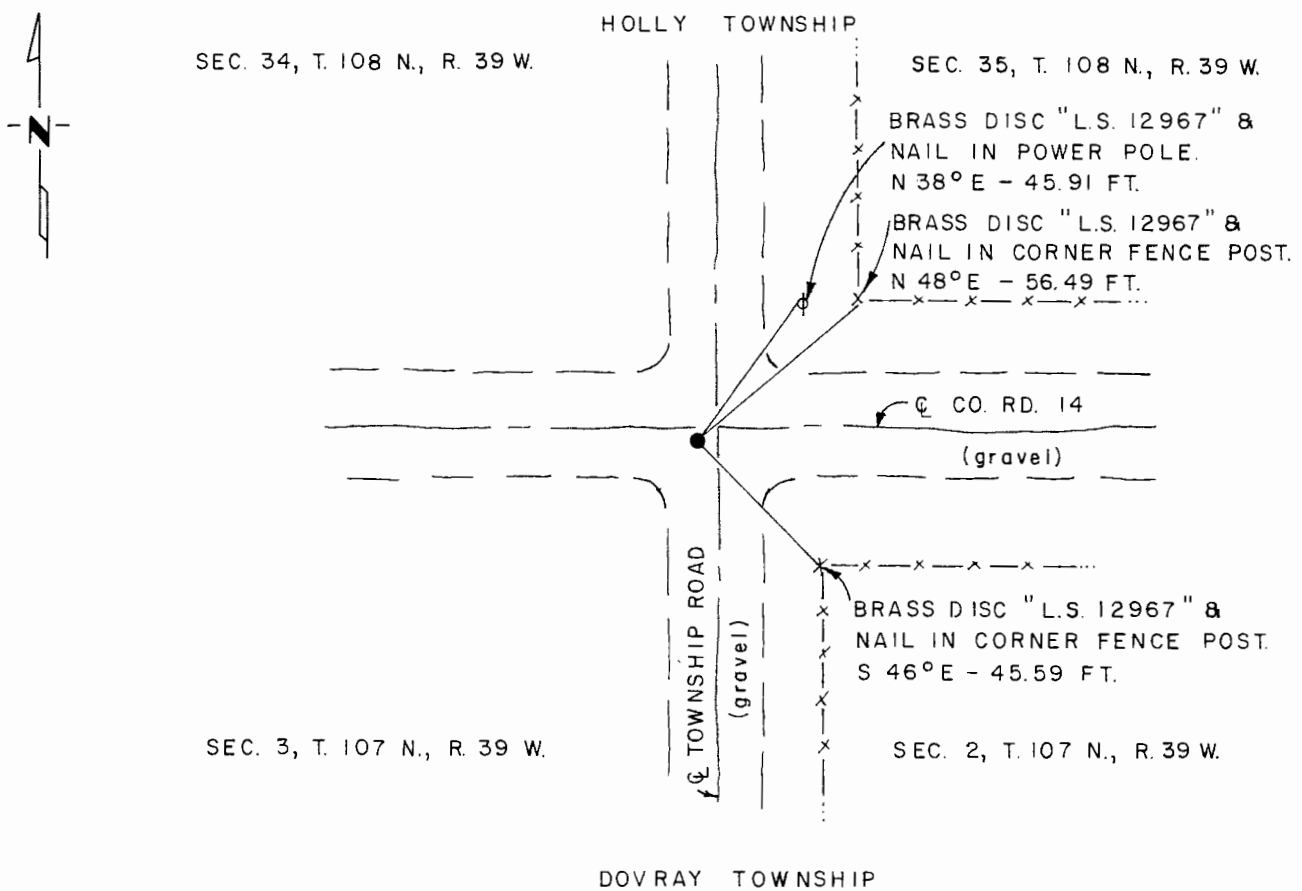
Northeast Corner of Section 3, Township 107 N., Range 39 W., 5th P.M.

STATE OF MINNESOTA, County of Murray

At the corner location shown on the sketch:

- On Oct. 9, 1980 found a concrete monument 0.8' below grade; monument was 3.0' west & 2.0' south of the intersection of Co. Rd. 14 & Twsp. Rd. center lines.
DATE,
- left monument as found, lowered monument, removed monument (explain)
- On Oct. 9, 1980 placed a railroad spike on the east & west side of the concrete monument for locating purposes.
DATE

SKETCH OF REFERENCE TIES



I hereby certify that this document and the data contained herein was prepared by me or under my direct supervision.

[Signature] 12/28/81
SIGNATURE DATE

Registration No. 12967

- Land Surveyor, Professional Engineer
- County Surveyor, County Engineer

OFFICE OF THE COUNTY RECORDER

County of Murray

I hereby certify that this document was filed in the Co. Recorders office at 10 .M. on the 18th day of February A.D., 19 82

County Recorder *[Signature]*

By _____, Deputy

DOCUMENT NO. _____